

NUMBER OF EXISTING PARCELS OWNED BY 1133 TACONIC LLC & STISSING MOUNTAIN PROPERTY LLC				
Description	Lot Count Milan	Lot Count Milan/Pine Plains	Lot Count Pine Plains	Lot Count Total
Existing Lots in Sports City Estates Subdivision	24	21	178	223
Non-Sports City Estates Parcels Owned by 1133 Taconic LLC	0	2	23	25
TOTAL NUMBER OF EXISTING PARCELS OWNED	24	23	201	248

SUMMARY OF ALL EXISTING PARCELS OWNED BY 1133 TACONIC LLC & STISSING MOUNTAIN PROPERTY LLC

Lot#s	Tax Parcel #	Owner	Parcel Acreage Milan	Parcel Acreage Pine Plains	Total Parcel Acreage
1-230	Sports City Estates *	1133 Taconic LLC	23.9	175.93	199.84
231A-D,F	133800-6672-00-359795	1133 Taconic LLC	334.86	0.29	335.15
231E	134200-6672-00-566940	1133 Taconic LLC	0	216.23	216.23
232	134200-6672-00-700750	1133 Taconic LLC	0	0.31	0.31
233A-I	133600-6672-00-583233	1133 Taconic LLC	84.03	0	84.03
233C-I	134200-6672-00-920321	1133 Taconic LLC	0	692.74	692.74
234N,E,S	134200-6772-00-005766	1133 Taconic LLC	0	365.27	365.27
235	134200-6772-00-350650	1133 Taconic LLC	0	64.84	64.84
236	134200-6772-00-556715	1133 Taconic LLC	0	50.56	50.56
237N,S	134200-6772-00-637487	1133 Taconic LLC	0	166.52	166.52
238E,W	134200-6671-00-800343	1133 Taconic LLC	0	82.59	82.59
239	134200-6672-00-702798	1133 Taconic LLC	0	9.15	9.15
240	134200-6772-00-286724	1133 Taconic LLC	0	0.92	0.92
241	134200-6773-00-340013	1133 Taconic LLC	0	30.52	30.52
242	134200-6772-00-320917	1133 Taconic LLC	0	65.32	65.32
243	134200-6772-00-386882	Stissing Mountain Property LLC	0	2.5	2.5
244	134200-6772-00-435888	Stissing Mountain Property LLC	0	2.52	2.52
245	134200-6772-00-408830	Stissing Mountain Property LLC	0	12.78	12.78
246E,W	134200-6772-00-101015	Stissing Mountain Property LLC	0	133.05	133.05
247	134200-6771-00-569770	Stissing Mountain Property LLC	0	100.33	100.33
248N,E,S	134200-6772-00-476306	Stissing Mountain Property LLC	0	287.39	287.39
249	134200-6772-00-625068	Stissing Mountain Property LLC	0	54.06	54.06
250	134200-6772-00-628237	Stissing Mountain Property LLC	0	4.66	4.66
251N,S	134200-6771-00-749462	Stissing Mountain Property LLC	0	86.58	86.58
252	134200-6672-00-799780	1133 Taconic LLC	0	3.72	3.72
253	134200-6772-00-652229	1133 Taconic LLC	0	2.19	2.19
254	134200-6772-00-603407	1133 Taconic LLC	0	2.61	2.61
255	134200-6672-00-927785	Stissing Mountain Property LLC	0	20	20
Road	Ferris Lane	1133 Taconic LLC	2.15	0	2.15
Road	Hicks Hill Road	1133 Taconic LLC	0	5.08	5.08
Road	Lake Road	1133 Taconic LLC	0	2.15	2.15
Road	Sherwood Road	1133 Taconic LLC	0	3.51	3.51
Road	Woodward Hill Road	1133 Taconic LLC	0	10.67	10.67
TOTAL	TOTAL SITE ACREAGE	1133 Taconic LLC	444.93	2654.51	3099.44

* See Tables CAD for individual Tax Parcel Numbers for Sports City Estates Subdivision.

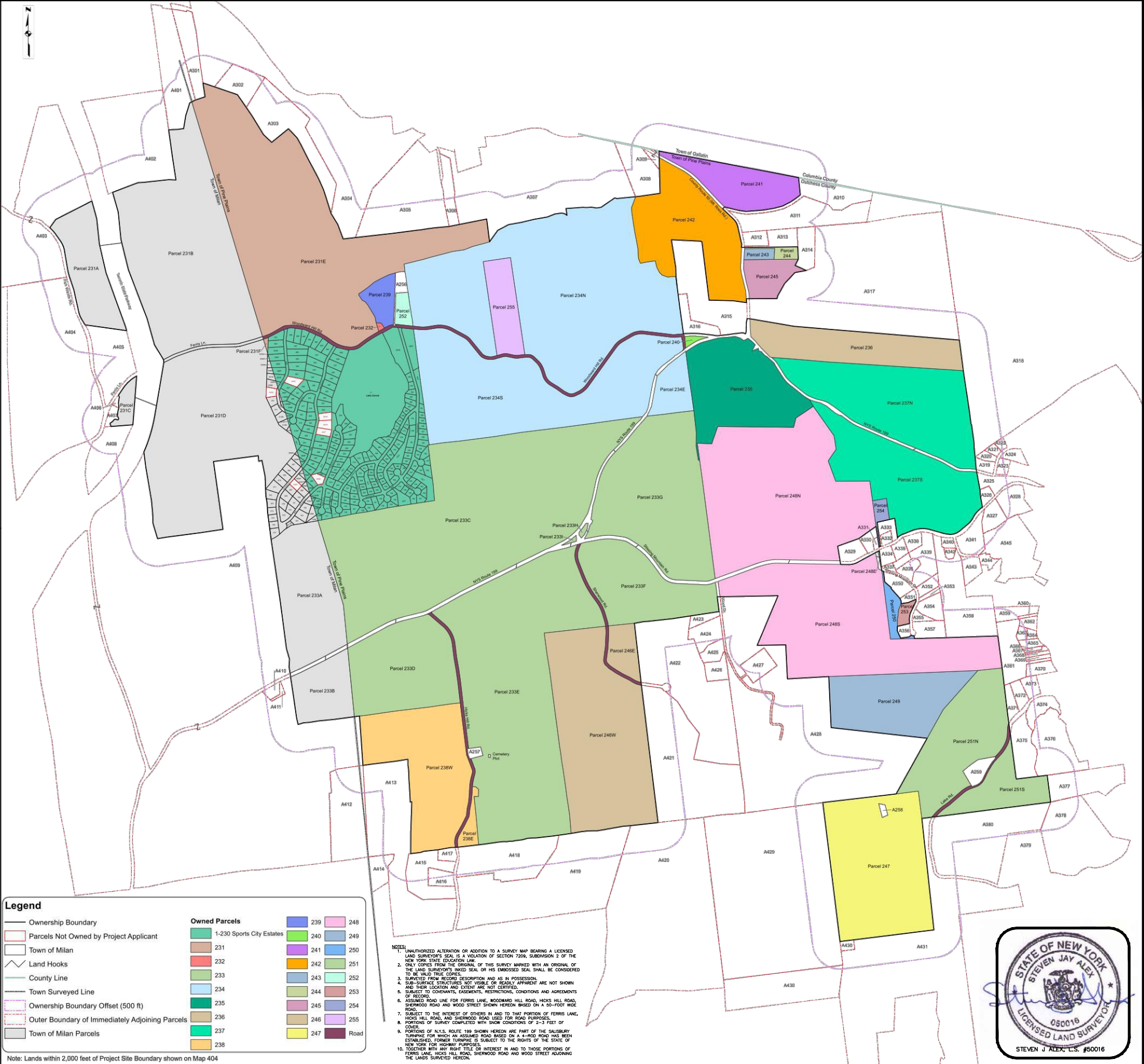
As of January 2021

NOTE: METES AND BOUNDS DESCRIPTIONS OF ALL THE PROPERTIES ARE AVAILABLE UPON REQUEST.

ADJOINER PARCELS NOT OWNED BY 1133 TACONIC LLC & STISSING MOUNTAIN PROPERTY LLC

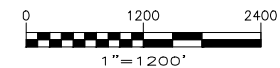
Lot#	Tax Parcel #	Lands NIF	Acres	Lot#	Tax Parcel #	Lands NIF	Acres
A256	134200-6672-00-736822	Funk, Lester H IV	2.2	A357	134200-6772-00-697201	Casazza, Jane	4
A257	134200-6671-00-807978	Burnett, Robert D	0.8	A358	134200-6772-00-746240	Melrick, Walter C	23.9
A258	134200-6771-00-640848	MacPherson, Walden R	0.6	A359	134200-6772-00-852220	Liberta & Castaldi Realty LLC	3.9
A259	134200-6771-00-778932	Adams, Haldis	1	A360	134200-6772-00-872223	Wueller, Allison	0.5
A301	134200-6673-00-330300	Popp, Carl	13	A361	134200-6772-00-847153	Henry, Seth	10.8
A302	134200-6673-00-441159	Popp, Carl	8.5	A362	134200-6772-00-877203	Mennler, Anthony	1.5
A303	134200-6673-00-514133	Popp, Carl J	20.8	A363	134200-6772-00-864185	Tenore, Theodore M	1
A304	134200-6673-00-705050	Popp, Carl J	96.5	A364	134200-6772-00-882184	Gannon, Ashley	0.8
A305	134200-6673-00-742002	Popp, Carl John	39.1	A365	134200-6772-00-880167	Unhrass, Robert G	1.5
A306	134200-6673-00-817015	Smith, Ruth L	5.2	A366	134200-6772-00-863164	Chang, Eunjung J	0.5
A307	134200-6673-00-860554	Murphy, James A	97.4	A367	134200-6772-00-892160	Fosco, Ivez C	2.4
A308	134200-6773-00-176043	Murphy, James A	10.4	A368	134200-6772-00-897155	Sindelar, Robin	0.8
A309	134200-6773-00-196057	Wright, Courtland	1.5	A369	134200-6772-00-897148	2 HB Holdings LLC	0.8
A310	134200-6772-00-516993	Fuchs, Christian	13.1	A370	134200-6772-00-896127	Woolis, Diana	2.5
A311	134200-6772-00-518954	Fuchs, Christian	20.5	A371	134200-6772-00-842071	De Santis, Drew L	2.3
A312	134200-6772-00-380915	Goli-Fuchs Rakus	2.7	A372	134200-6772-00-856384	Cutli, Francis P	2.4
A313	134200-6772-00-420911	Meccariello, Kenneth	4.3	A373	134200-6772-00-880099	Woolis Diana D	2.3
A314	134200-6772-00-471897	Meccariello, Kenneth	5.8	A374	134200-6772-00-900061	Holada Properties LLC	4.6
A315	134200-6772-00-279795	Henshaw, Dawn	24.7	A375	134200-6771-00-867892	Artlers Club The	9.5
A316	134200-6772-00-258755	Henshaw, Dawn	4.3	A376	134200-6772-00-916001	Artler Club of Pine Plains Inc	16.6
A317	134200-6772-00-858844	Traiser, Zebulon	135.4	A377	134200-6871-00-011935	Mount, Melinda J	13.9
A318	134200-6872-00-005780	Holada Properties LLC	344.9	A378	134200-6771-00-971827	Murphy, James A	33.1
A319	134200-6772-16-795497	Lennon, Thomas A	1.8	A379	134200-6771-00-868786	Noskin, Kenneth	15.7
A320	134200-6772-12-799514	Lennon, Thomas A	1.1	A380	134200-6771-00-796826	Friends of Stissing Landmark	44.1
A321	134200-6772-12-811525	Pecorella Jaclyn I	0.8	A401	133600-6673-00-304289	Popp, Carl	25.4
A322	134200-6772-12-824534	Disalvo, Debra J	0.7	A402	133600-6673-00-341894	N Y S Cons Dept	48.1
A323	134200-6772-16-828496	Gert Gary	1.3	A403	133600-6672-00-080971	Kalt, Martin	97.7
A324	134200-6772-12-848516	Howley, Theodore	2	A404	133600-6672-00-097677	Muller, William M	109.8
A325	134200-6772-00-828468	Talman, Brian D	4.2	A405	133600-6672-00-212697	Larkin, Denis W	17.4
A326	134200-6772-00-763445	Casswell, David	1.2	A406	133600-6672-00-216613	Christiana Trust Trustee	0.5
A327	134200-6772-00-811405	Nickelbocker, Jay P	3.9	A407	133600-6672-00-210589	Platt, Edith I	1.1
A328	134200-6772-00-843428	Hutchings, Richard W	5.7	A408	133600-6672-00-198531	Agriflio Vincent T	12.3
A329	134200-6772-00-549345	Kaestle, Louisa Grassi	3.4	A409	133600-6672-00-329110	N Y S Cons Dept	705.4
A330	134200-6772-00-580360	Kaestle, Louisa Grassi	1.9	A410	133600-6672-00-504092	Pulver, William J	1.1
A331	134200-6772-00-594354	Puati, Susan Gioia	0.5	A411	133600-6672-00-518089	Connolly, Dina M	0.5
A332	134200-6772-00-612360	Puati, James	0.8	A412	133600-6671-00-637866	Blahut, Leslie C	23.9
A333	134200-6772-00-617382	Gugliemelli Rosa LT	2.3	A413	134200-6671-00-710810	Blahut, Leslie C	54.7
A334	134200-6772-00-616333	Heaney, Bernard A	1.7	A414	134200-6671-00-692758	Klepacz, Christine Trustee	4.9
A335	134200-6772-00-640340	Orlandi, Michael V	1.6	A415	134200-6671-00-763763	Blahut, Leslie C	12.3
A336	134200-6772-00-667362	Murphy, Patrick	2	A416	134200-6671-00-805750	Dembowski, Olga LT	3.1
A337	134200-6772-00-624313	Piate, Anna	0.8	A417	134200-6671-00-818791	Schmidt, Robert Carl	1.8
A338	134200-6772-00-669309	Orlandi, John V	3.1	A418	134200-6671-00-939784	Kreps, Marvin L II	25.9
A339	134200-6772-00-686336	Kaestle, David	6.9	A419	134200-6671-00-972710	Satyagraha Inc	70
A340	134200-6772-00-728356	Feinberg, Eric	1	A420	134200-6771-00-208895	Tanawanda, Rod	134.1
A341	134200-6772-00-769359	Casazza, Edward J Jr	5.8	A421	134200-6771-00-249842	Hoffman, Jeffrey	61.3
A342	134200-6772-00-782340	Melrick, Walter C	0.8	A422	134200-6772-00-255884	Hoffman, Jeffrey	57.8
A343	134200-6772-00-763311	Roller, Donald A	3.2	A423	134200-6772-00-285216	McQuade, John H	1.9
A344	134200-6772-00-805327	Barnett, Robert A	1.4	A424	134200-6772-00-291183	Hediges, Robert M	5.3
A345	134200-6772-00-841172	Castaldi, Linda	19.1	A425	134200-6772-00-300155	Hediges, William	2.7
A350	134200-6772-00-843263	Orlandi, John V	3	A426	134200-6772-00-309121	Szalaszi, Joseph	3.5
A351	134200-6772-00-692259	Michelle, Lisa M	1	A427	134200-6772-00-388140	Barbafoglio, Gino P	5.1
A352	134200-6772-00-662277	Walls, Marlene Trustee	2.2	A428	134200-6772-00-458033	Woods Mary	162.5
A353	134200-6772-00-693261	Chionchio, Paul	0.8	A429	134200-6771-00-408725	Grassi, Louisa G	151
A354	134200-6772-00-700240	Chionchio, Paul	3.9	A430	134200-6771-00-430550	Nature Conservancy	27.1
A355	134200-6772-00-678221	Monteleone, Giuseppe	1.1	A430	134200-6771-00-541825	Friends Of Stissing Landmark	1
A356	134200-6772-00-649197	Uffer Properties, Inc	1.1	A431	134200-6771-00-670800	Nature Conservancy	141.6

See Tables A & B for Sports City Subdivision Owner Parcels.



Note: Lands within 2,000 feet of Project Site Boundary shown on Map 404

THIS DRAWING IS INTENDED TO BE PRINTED IN COLOR. BLACK AND WHITE COPIES MAY NOT DISPLAY INFORMATION CORRECTLY.



OWNERS:
1133 TACONIC LLC & STISSING MOUNTAIN PROPERTY LLC
SITE ADDRESS:
FERRIS LANE, WOODWARD HILL ROAD, NYS ROUTE 199, COUNTY ROUTE 50,
STISSING MOUNTAIN ROAD, SHERWOOD ROAD, LAKE ROAD,
TOWNS OF PINE PLAINS & MILAN, DUTCHESS COUNTY, NEW YORK



HUDSON VALLEY PROJECT

TOWNS OF PINE PLAINS & MILAN, DUTCHESS COUNTY, NEW YORK



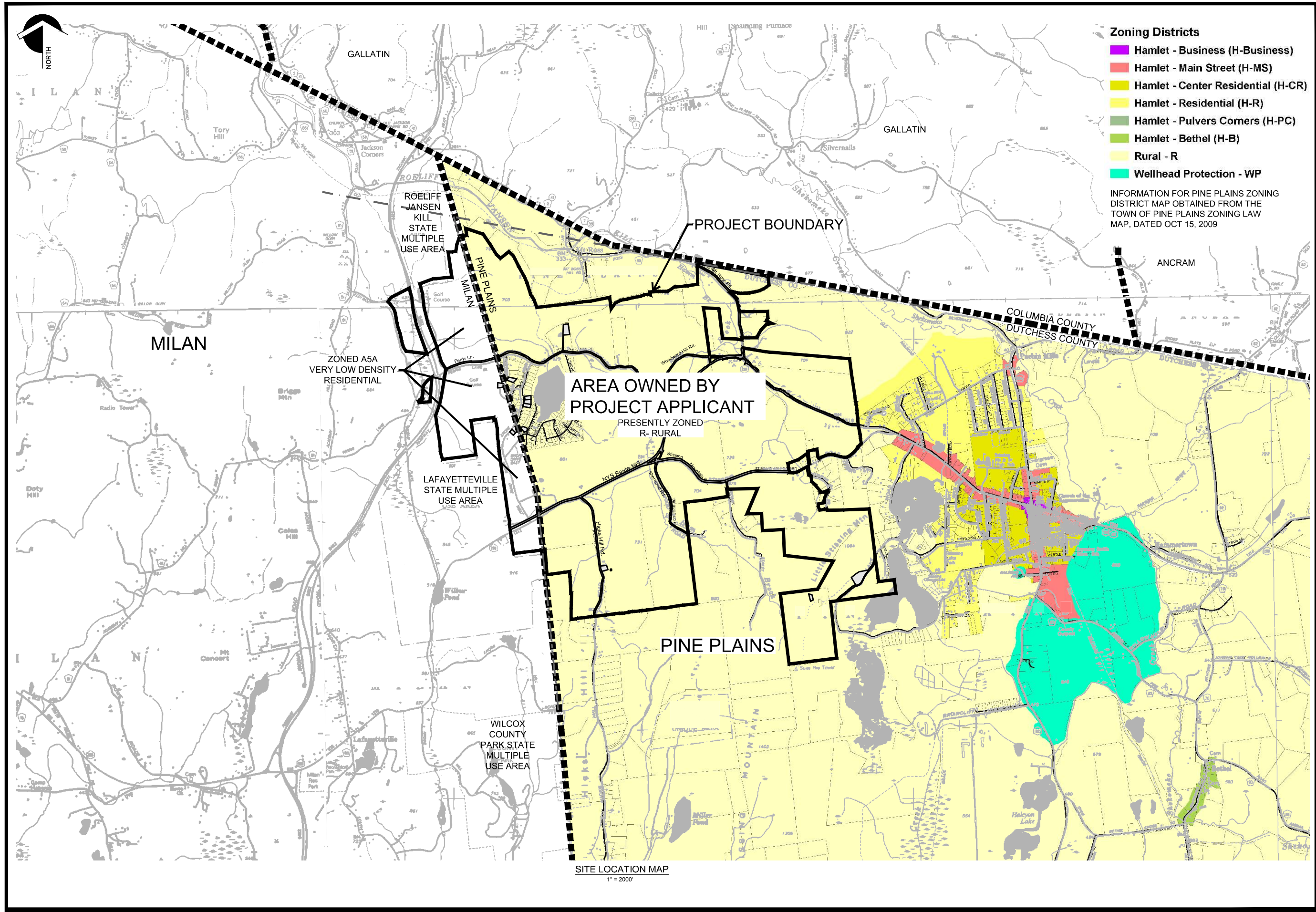
SURVEY MAP INCLUDING ADJOINERS WITHIN 500 FEET

03/19/21
80334.CC

SPORTS CITY ESTATES PARCELS OWNED BY 1133 TACONIC LLC

TABLE C - TOWN OF MILAN					
Lot #	Filed Map#	Tax Parcel #	Deed Liber	Page	Acres
003M	3623	133600-6672-10-496705	1246	436	0.001
004M	3623	133600-6672-10-497693	1388	321	0.07
005M	3623	133600-6672-10-498681	1246	436	0.18
006M	3623	133600-6672-10-501669	1785	640	0.26
007M	3623	133600-6672-11-503558	1577	204	0.37
008M	3623	133600-6672-11-503645	1280	835	0.83
010	3623	133600-6672-11-502614	1384	436	0.82
011	3623	133600-6672-11-509598	1384	464	0.32
012M	3623	133600-6672-11-509598	1700	74	0.66
013M	3623	133600-6672-11-527973	1517	668	0.59
014M	3623	133600-6672-11-535561	1700	74	0.16
049M	3623	133600-6672-11-525609	1406	629	0.09
050M	3623	133600-6672-11-518623	1994	464	0.1
056M	3977	133600-6672-11-548519	1369	33	0.07
069M	3977	133600-6672-11-548508	1577	858	0.44
067	3977	133600-6672-15-541498	1246	436	0.67
088	3977	133600-6672-15-534489	1246	436	0.66
089	3977	133600-6672-15-525479	1246	436	0.66
070	3977	133600-6672-15-517470	1246	436	0.65
071	3977	133600-6672-15-507459	1901	162	0.93
072	3977	133600-6672-15-501440	1611	432	0.72
073	3977	133600-6672-15-502429	1346	782	0.56
074	3977	133600-6672-15-503415	8257	468	0.48
075	3977	133600-6672-15-504403	8257	190	0.47
076	3977	133600-6672-15-505390	17031	318	0.47
077	3977	133600-6672-15-507376	02-2004	6512	0.62
078	3977	133600-6672-15-524408	1246	436	0.77
079	3977	133600-6672-15-522427	1246	436	0.55
080	3977	133600-6672-15-528442	1246	436	0.69
081	3977	133600-6672-15-537459	02-2003	5795	0.52
083M	3977	133600-6672-15-553472	1246	436	0.54
084M	3977	133600-6672-15-558482	1246	436	0.22
089M	3977	133600-6672-15-564460	1246	436	0.27
099	3977	133600-6672-15-569450	1246	436	0.52
100	3977	133600-6672-15-569441	1246	436	0.51
101	3977	133600-6672-15-5642431	1246	436	0.61
102	3977	133600-6672-15-534417	1246	436	0.5
103	3977	133600-6672-15-546397	1246	436	0.54
104	3977	133600-6672-15-557407	1480	264	0.77
105	3977	133600-6672-15-563421	1246	436	0.6
106M	3977	133600-6672-15-570434	1246	436	0.35
107M	3977	133600-6672-15-572443	1246	436	0.001
108M	3977	133600-6672-15-576421	1531	506	0.02
109M	3977	133600-6672-15-579412	1246	436	0.59
110M	3977	133600-6672-15-577369	1246	436	0.28
CL1M	3977	133600-6672-15-534391	1246	436	0.22
R01	3977	133600-6672-15-520389	1246	436	0.5
R02	3977	133600-6672-15-520389	1246	436	2.65

TABLE D1 - TOWN OF PINE PLAINS					
Lot #	Filed Map#	Tax Parcel #	Deed Liber	Page	Acres
001	3623	134200-6672-11-509730	1246	436	0.81
002	3623	134200-6672-11-509719	1246	436	0.8
003P	3623	134200-6672-11-511706	1246	436	0.85
004P	3623	134200-6672-11-510664	1785	640	0.87
005P	3623	134200-6672-11-510681	1246	436	0.84
006P	3623	134200-6672-11-518669	1785	640	0.67
007P	3623	134200-6672-11-517656	1772	204	0.46
008P	3623	134200-6672-11-516648	1280	835	0.11
009P	3623	134200-6672-11-516655	1772	204	0.61
010P	3623	134200-6672-11-516658	1517	668	0.11
011P	3623	134200-6672-11-516659	1700	74	0.84
012P	3623	134200-6672-11-516660	1700	74	0.84
013P	3623	134200-6672-11-516661	1700	74	0.84
014P	3623	134200-6672-11-516662	1700	74	0.84
015	3623	134200-6672-11-516663	1246	436	0.75
016	3623	134200-6672-11-516664	1246	436	0.6
017	3623	134200-6672-11-516665	1367	919	0.61
018	3623	134200-6672-11-516666	1935	388	0.69
019	3623	134200-6672-11-517603	1741	569	0.5
020	3623	134200-6672-11-5172587	1650	695	0.55
021	3623	134200-6672-11-517574	1246	436	0.46
022	3623	134200-6672-11-516667	1772	204	0.59
023	3623	134200-6672-11-516668	02-2004	6512	0.55
024	3623	134200-6672-11-516669	1881	495	0.64
025	3623	134200-6672-11-516670	1790	56	0.75
026	3623	134200-6672-11-516671	1385	145	0.75
027	3623	134200-6672-11-516672	1591	370	0.69
028	3623	134200-6672-11-516673	1703	74	0.64
029	3623	134200-6672-11-516674	1290	661	0.67
030	3623	134200-6672-11-516675	1930	737	0.71
031	3623	134200-6672-11-516676	1298	694	0.71
032	3623	134200-6672-11-516677	1278	696	0.72
033	3977	134200-6672-11-516678	1679	419	0.78
034	3977	134200-6672-11-516679	1285	45	0.83
035	3977	134200-6672-11-516680	1401	908	0.79
036	3977	134200-6672-11-516681	1246	436	0.8
037	3977	134200-6672-11-516682	1246	436	0.84
038	3977	134200-6672-11-516683	1246	436	0.84
039	3977	134200-6672-11-516684	1246	436	0.84
040	3977	134200-6672-11-516685	1246	436	0.84
041	3977	134200-6672-11-516686	1246	436	0.84
042	3977	134200-6672-11-516687	1246	436	0.84
043	3977	134200-6672-11-516688	1246	436	0.84
044	3977	134200-6672-11-516689	1246	436	0.84
045	3977	134200-6672-11-516690	1246	436	0.84
046	3977	134200-6672-11-516691	1246	436	0.84
047	3977	134200-6672-11-516692	1246	436	0.84
048	3977	134200-6672-11-516693	1246	436	0.84
049	3977	134200-6672-11-516694	1246	436	0.84
050	3977	134200-6672-11-516695	1246	436	0.84
051	3977	134200-6672-11-516696	1246	436	0.84
052	3977	134200-6672-11-516697	1246	436	0.84
053	3977	134200-6672-11-516698	1246	436	0.84
054	3977	134200-6672-11-516699	1246	436	0.84
055	3977	134200-6672-11-516700	1246	436	0.84
056	3977	134200-6672-11-516701	1246	436	0.84
057	3977	134200-6672-11-516702	1246	436	0.84
058	3977	134200-6672-11-516703	1246	436	0.84
059	3977	134200-6672-11-516704	1246	436	0.84
060	3977	134200-6672-11-516705	1246	436	0.84
061	3977	134200-6672-11-516706	1246	436	0.84
062	3977	134200-6672-11-516707	1246	436	0.84
063	3977	134200-6672-11-516708	1246	436	0.84
064	3977	134200-6672-11-516709	1246	436	0.84
065	3977	134200-6672-11-516710	1246	436	0.84
066	3977	134200-6672-11-516711	1246	436	0.84
067	3977	134200-6672-11-516712	1246	436	0.84
068	3977	134200-6672-11-516713	1246	436	0.84
069	3977	134200-6672-11-516714	1246	436	0.84
070	3977	134200-6672-11-516715	1246	436	0.84
071	3977	134200-6672-11-516716	1246	436	0.84
072	3977	134200-6672-11-516717	1246	436	0.84
073	3977	134200-6672-11-516718	1246	436	0.84
074	3977	134200-6672-11-516719	1246	436	0.84
075	3977	134200-6672-11-516720	1246	436	0.84
076	3977	134200-6672-11-516721	1246	436	0.84
077	3977	134200-6672-11-516722	1246	436	0.84
078	3977	134200-6672-11-516723	1246	436	0.84
079	3977	134200-6672-11-516724	1246	436	0.84
080	3977	134200-6672-11-516725	1246	436	0.84
081	3977	134200-6672-11-516726	1246	436	0.84
082	3977	134200-6672-11-516727	1246	436	0.84
083	3977	134200-6672-11-516728	1246	436	0.84
084	3977	134200-6672-11-516729	1246	436	0.84
085	3977	134200-6672-11-516730	1246	436	0.84
086	3977	134200-6672-11-516731	1246	436	0.84
087	3977	134200-6672-11-516732	1246	436	0.84
088	3977	134200-6672-11-516733	1246	436	0.84
089	3977	134200-6672-11-516734	1246	436	0.84
090	3977	134200-6672-11-516735	1246	436	0.84
091	3977	134200-6672-11-516736	1246	436	0.84
092	3977	134200-6672-11-516737	1246	436	0.84
093	3977	134200-6672-11-516738	1246	436	0.84
094	3977	134200-6672-11-516739	1246	436	0.84
095	3977	134200-6672-11-516740	1246	436	0.84
096	3977	134200-6672-11-516741	1246	436	0.84
097	3977	134200-6672-11-516742	1246	436	0.84
098	3977	134200-6672-11-516743	1246	436	0.84
099	3977	134200-6672-11-516744	1246	436	0.84
100	3977	134200-6672-11-516745	1246	436	0.84
101	3977	134200-6672-11-516746	1246	436	0.84
102	3977	134200-6672-11-516747	1246	436	0.84
103	3977	134200-6672-11-516748	1246	436	0.84
104	3977	134200-6672-11-516749	1246	436	0.84
105	3977	134200-6672-11-516750	1246	436	0.84
106	3977	134200-6672-11-516751	1246	436	0.84
107	3977	134200-6672-11-516752	1246	436	0.84
108	3977	134200-6672-11-516753	1246	436	0.84
109	3977	134200-6672-11-516754	1246	436	0.84
110	3977	134200-6672-11-516755	1246	436	0.84
111	3977	134200-6672-11-516756	1246	436	0.84
112	3977	134200-6672-11-516757	1246	436	0.84
113	3977	134200-6672-11-516758	1246	436	0.84
114	3977	134200-6672-11-516759	1246	436	0.84
115	3977	134200-6672-11-516760	1246	436	0.84
116	3977	134200-6672-11-516761	1246	436	0.84
117	3977	134200-6672-11-51676			



- Zoning Districts**
- Hamlet - Business (H-Business)
 - Hamlet - Main Street (H-MS)
 - Hamlet - Center Residential (H-CR)
 - Hamlet - Residential (H-R)
 - Hamlet - Pulvers Corners (H-PC)
 - Hamlet - Bethel (H-B)
 - Rural - R
 - Wellhead Protection - WP

INFORMATION FOR PINE PLAINS ZONING DISTRICT MAP OBTAINED FROM THE TOWN OF PINE PLAINS ZONING LAW MAP, DATED OCT 15, 2009

AREA OWNED BY PROJECT APPLICANT
PRESENTLY ZONED R-RURAL

ZONED A5A
VERY LOW DENSITY
RESIDENTIAL

SITE LOCATION MAP
1" = 2000'

THIS DRAWING IS INTENDED TO BE PRINTED IN COLOR. BLACK AND WHITE COPIES MAY NOT DISPLAY INFORMATION CORRECTLY.



OWNERS:
1135 TACONIC LLC & STISSING MOUNTAIN PROPERTY LLC
SITE ADDRESS:
FERRIS LANE, WOODWARD HILL ROAD, NYS ROUTE 199, COUNTY ROUTE 50,
STISSING MOUNTAIN ROAD, SHERWOOD ROAD, LAKE ROAD
TOWNS OF PINE PLAINS & MILAN, DUTCHESS COUNTY, NEW YORK

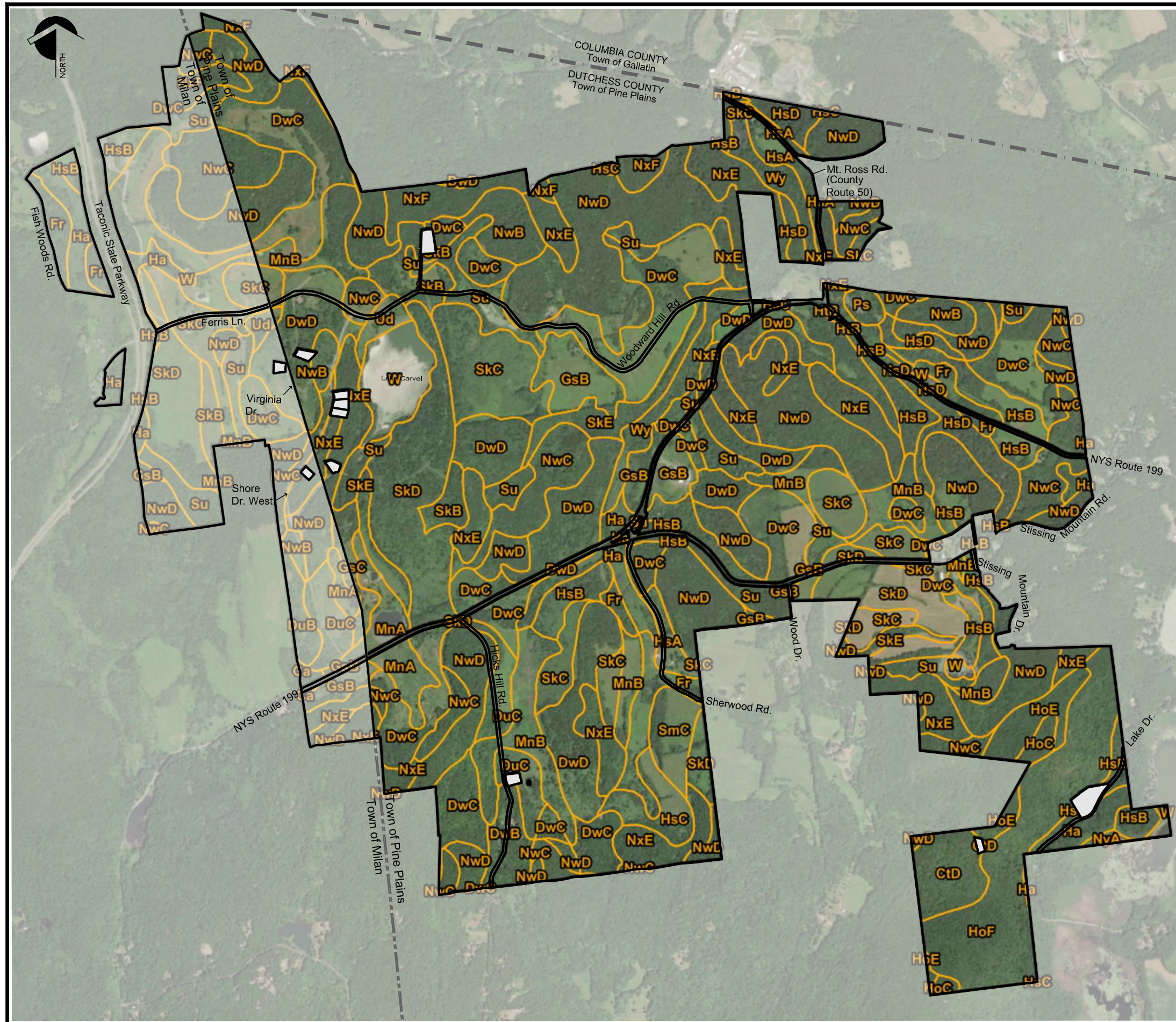


HUDSON VALLEY PROJECT
TOWNS OF PINE PLAINS & MILAN, DUTCHESS COUNTY, NEW YORK



SITE LOCATION AND
PINE PLAINS ZONING

03/19/21
80334.CC



- Legend**
- Project Site
- Soil Map Unit**
- Ca; Canandaigua silt loam, neutral substratum
 - CtD; Chatfield-Hollis complex, 15 to 35 percent slopes, very rocky
 - DuB; Dutchess silt loam, 3 to 8 percent slopes
 - DuC; Dutchess silt loam, 8 to 15 percent slopes
 - DwB; Dutchess-Cardigan complex, undulating, rocky
 - DwC; Dutchess-Cardigan complex, rolling, rocky
 - DwD; Dutchess-Cardigan complex, hilly, rocky
 - Fr; Fredon silt loam
 - GsB; Georgia silt loam, 3 to 8 percent slopes
 - GsC; Georgia silt loam, 8 to 15 percent slopes
 - Ha; Halsey mucky silt loam
 - HoC; Hollis-Chatfield rock outcrop complex, rolling
 - HoE; Hollis-Chatfield rock outcrop complex, steep
 - HoF; Hollis-Chatfield rock outcrop complex, very steep
 - HsA; Hoosic gravelly loam, nearly level
 - HsB; Hoosic gravelly loam, undulating
 - HsC; Hoosic gravelly loam, rolling
 - HsD; Hoosic gravelly loam, hilly
 - HtB; Hoosic channery loam, fan, 3 to 8 percent slopes
 - MnA; Massena silt loam, 0 to 3 percent slopes
 - MnB; Massena silt loam, 3 to 8 percent slopes
 - NwB; Nassau-Cardigan complex, undulating, very rocky
 - NwC; Nassau-Cardigan complex, rolling, very rocky
 - NwD; Nassau-Cardigan complex, hilly, very rocky
 - NxE; Nassau-Rock outcrop complex, steep
 - NxF; Nassau-Rock outcrop complex, very steep
 - NyA; Natchaug muck, 0 to 2 percent slopes
 - Ps; Pits, gravel
 - SkB; Stockbridge silt loam, 3 to 8 percent slopes
 - SkC; Stockbridge silt loam, 8 to 15 percent slopes
 - SkD; Stockbridge silt loam, 15 to 25 percent slopes
 - SkE; Stockbridge silt loam, 25 to 45 percent slopes
 - SmC; Stockbridge-Farmington complex, rolling, rocky
 - Su; Sun silt loam
 - Ud; Udorthents, smoothed
 - W; Water
 - Wy; Wayland silt loam

MAP SOURCE:
ESRI, MAXAR, GEOEYE, EARTHSTAR GEOGRAPHICS, CNES/AIRBUS DS, USDA, USGS, AEROGRIID, IGN, AND THE GIS USER COMMUNITY; NYS DEPARTMENT OF TECHNOLOGY 2008 ROADS DATASET; USDA 2003 SOIL SURVEY DATASET FOR DUTCHESS COUNTY - LAST UPDATED ON 11 JUNE 2020.

THIS DRAWING IS INTENDED TO BE PRINTED IN COLOR, BLACK AND WHITE COPIES MAY NOT DISPLAY INFORMATION CORRECTLY.

OWNERS:
1133 TACONIC LLC & STISSING MOUNTAIN PROPERTY LLC
SITE ADDRESS:
FERRIS LANE, WOODWARD HILL ROAD, NYS ROUTE 199, COUNTY ROUTE 50,
STISSING MOUNTAIN ROAD, SHERWOOD ROAD, LAKE ROAD
TOWNS OF PINE PLAINS & MILAN, DUTCHESS COUNTY, NEW YORK

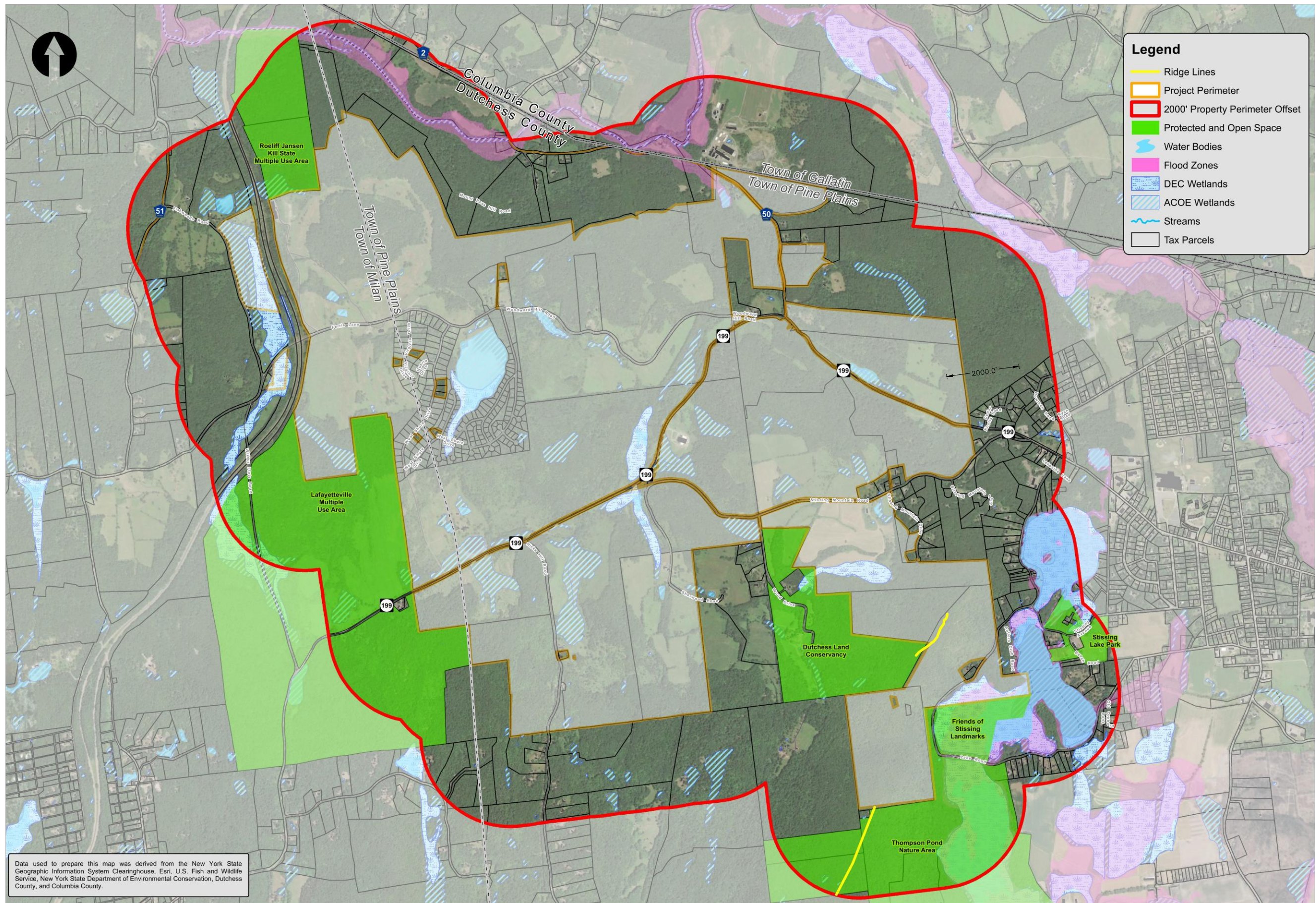


HUDSON VALLEY PROJECT

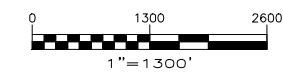
TOWNS OF PINE PLAINS & MILAN, DUTCHESS COUNTY, NEW YORK



SOILS SURVEY



THIS DRAWING IS INTENDED TO BE PRINTED IN COLOR. BLACK AND WHITE COPIES MAY NOT DISPLAY INFORMATION CORRECTLY.



OWNERS:
133 TACONIC LLC & STISSING MOUNTAIN PROPERTY LLC
SITE ADDRESS:
FERRIS LANE, WOODWARD HILL ROAD, NYS ROUTE 199, COUNTY ROUTE 50,
STISSING MOUNTAIN ROAD, SHERWOOD ROAD, LAKE ROAD
TOWNS OF PINE PLAINS & MILAN, DUTCHESS COUNTY, NEW YORK



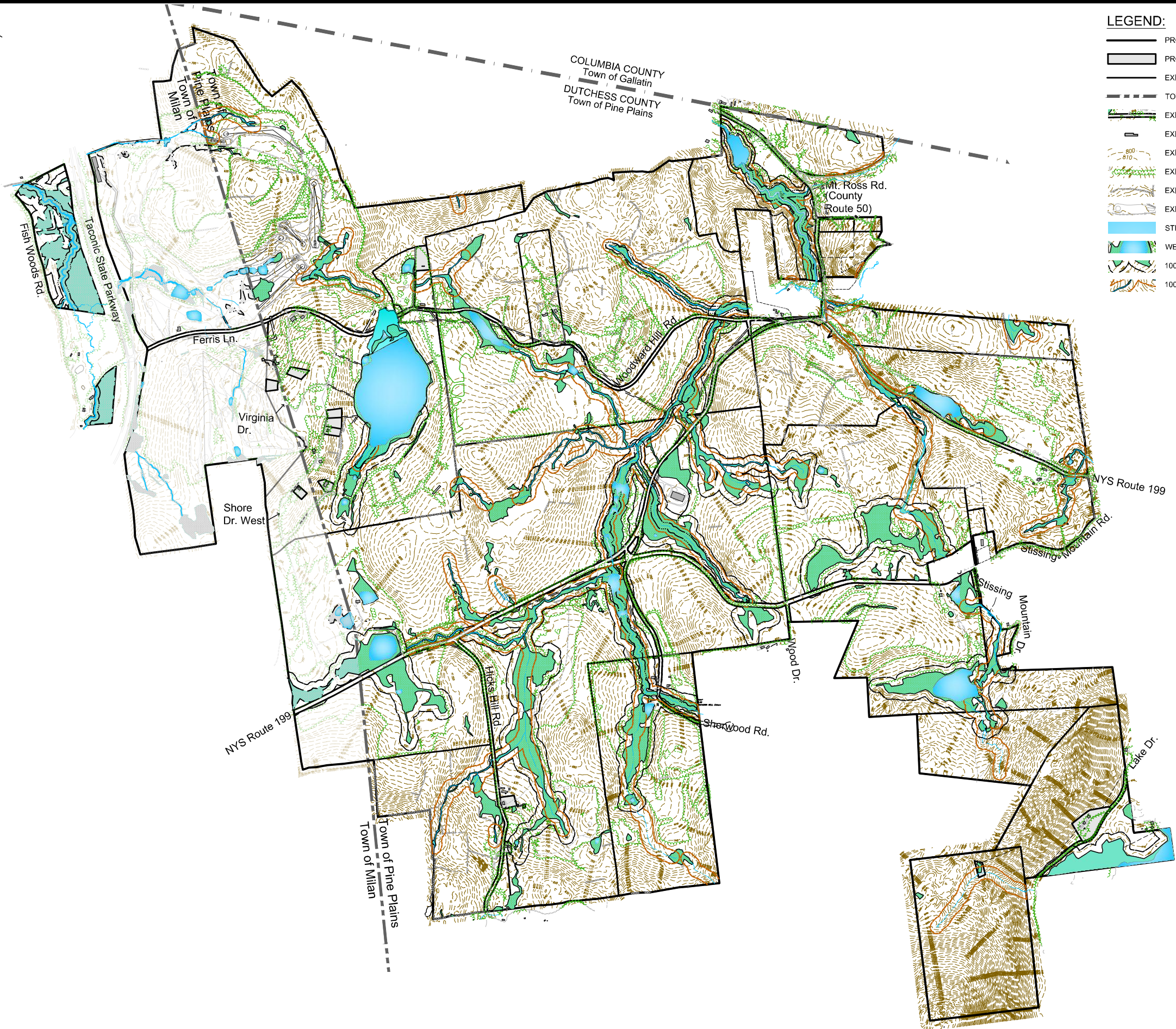
HUDSON VALLEY PROJECT

TOWNS OF PINE PLAINS & MILAN, DUTCHESS COUNTY, NEW YORK

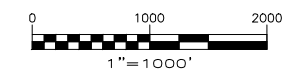


SURROUNDING PROPERTY WITHIN 2000' MAP

03/19/21
80334.CC



THIS DRAWING IS INTENDED TO BE PRINTED IN COLOR. BLACK AND WHITE COPIES MAY NOT DISPLAY INFORMATION CORRECTLY.



OWNERS:
133 TACONIC LLC & STISSING MOUNTAIN PROPERTY LLC
SITE ADDRESS:
FERRIS LANE, WOODWARD HILL ROAD, NYS ROUTE 199, COUNTY ROUTE 50,
STISSING MOUNTAIN ROAD, SHERWOOD ROAD, LAKE ROAD
TOWNS OF PINE PLAINS & MILAN, DUTCHESS COUNTY, NEW YORK



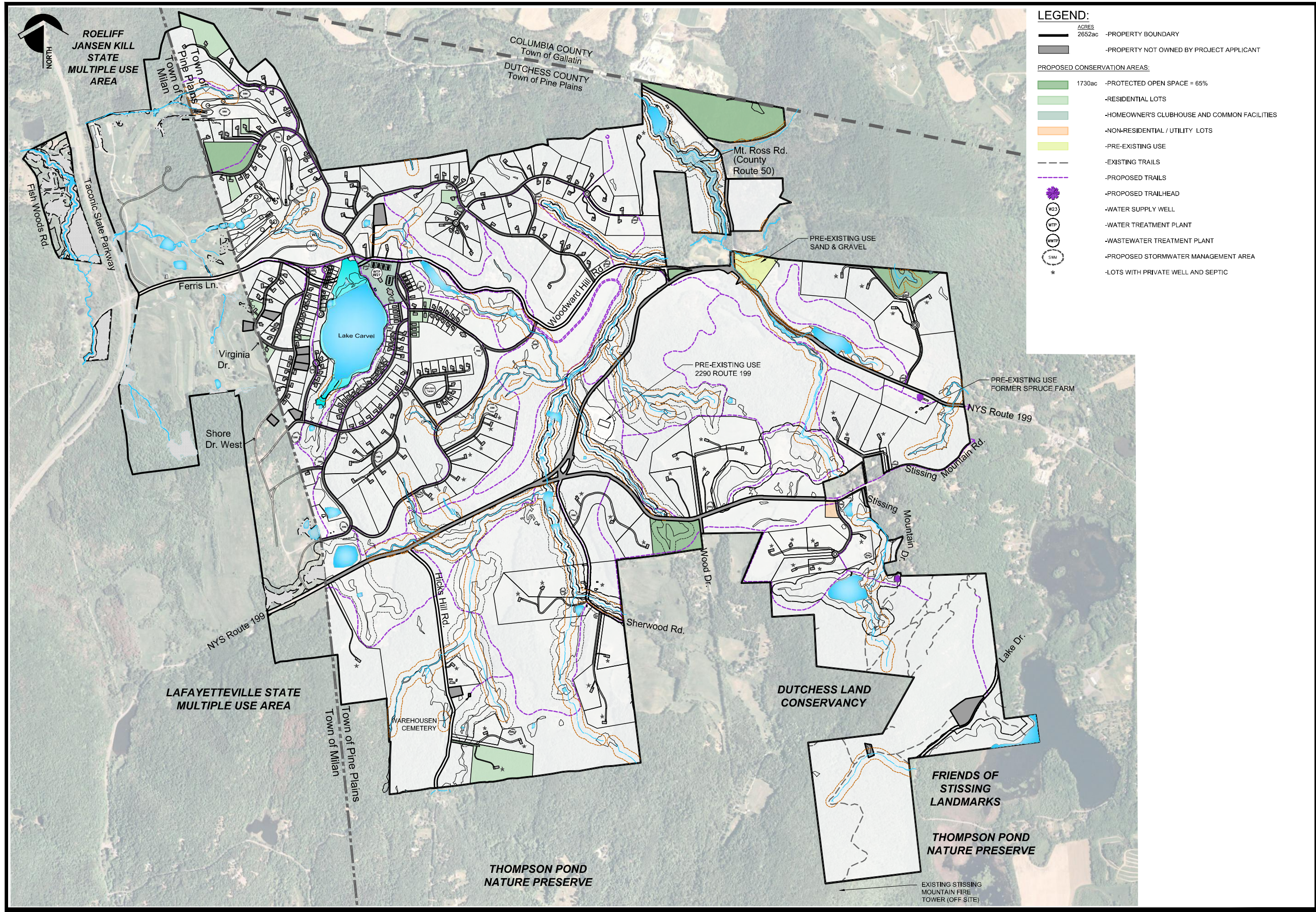
HUDSON VALLEY PROJECT

TOWNS OF PINE PLAINS & MILAN, DUTCHESS COUNTY, NEW YORK



EXISTING CONDITIONS, WETLANDS AND TOPOGRAPHIC SURVEY

03/19/21
80334.CC



THIS DRAWING IS INTENDED TO BE PRINTED IN COLOR. BLACK AND WHITE COPIES MAY NOT DISPLAY INFORMATION CORRECTLY.

OWNERS:
1133 TACONIC LLC & STISSING MOUNTAIN PROPERTY LLC
SITE ADDRESS:
FERRIS LANE, WOODWARD HILL ROAD, NYS ROUTE 199, COUNTY ROUTE 50,
STISSING MOUNTAIN ROAD, SHERWOOD ROAD, LAKE ROAD
TOWNS OF PINE PLAINS & MILAN, DUTCHESS COUNTY, NEW YORK



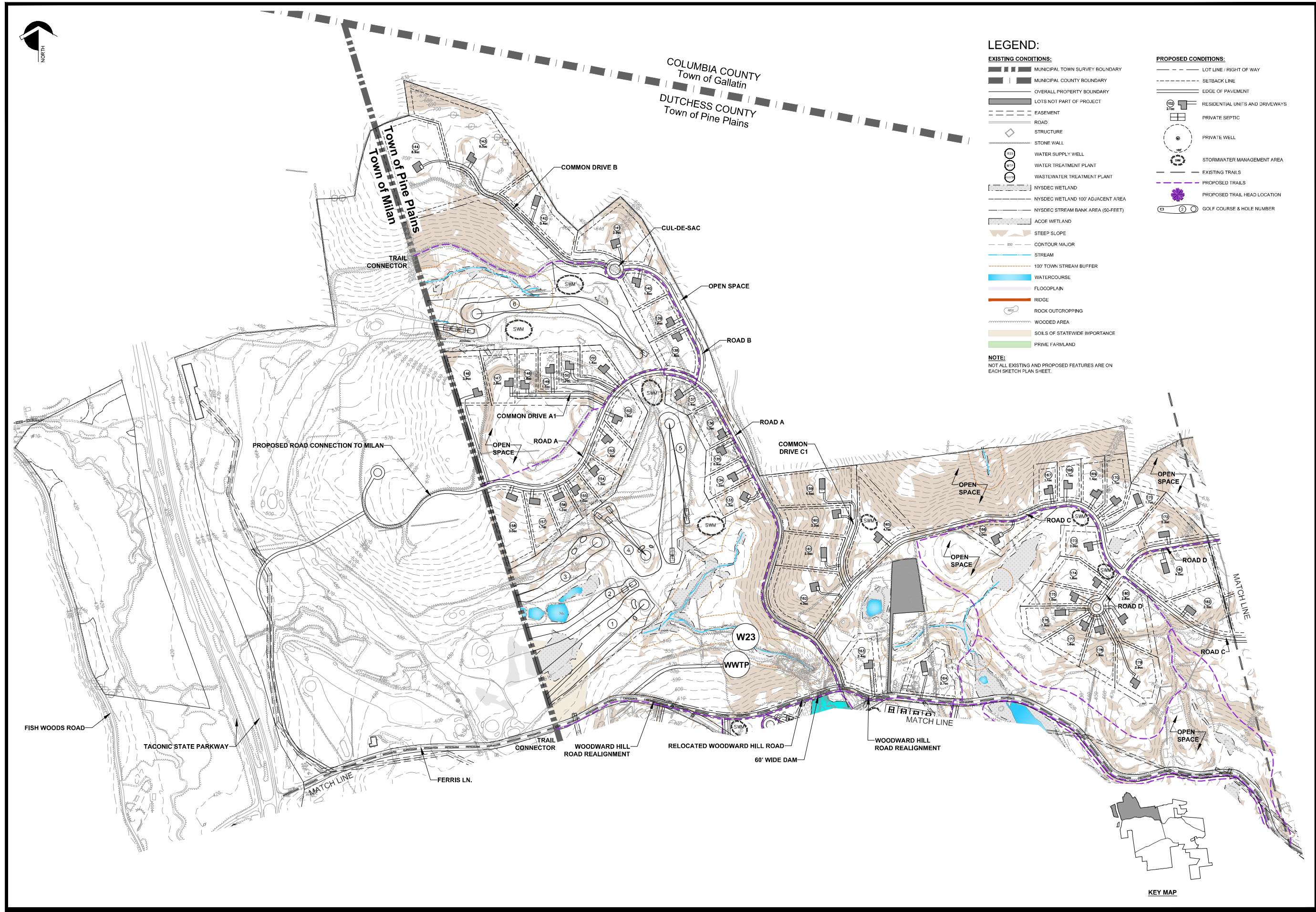
HUDSON VALLEY PROJECT

TOWNS OF PINE PLAINS & MILAN, DUTCHESS COUNTY, NEW YORK



CONSERVATION FIGURE

03/19/21
80334.CC



LEGEND:

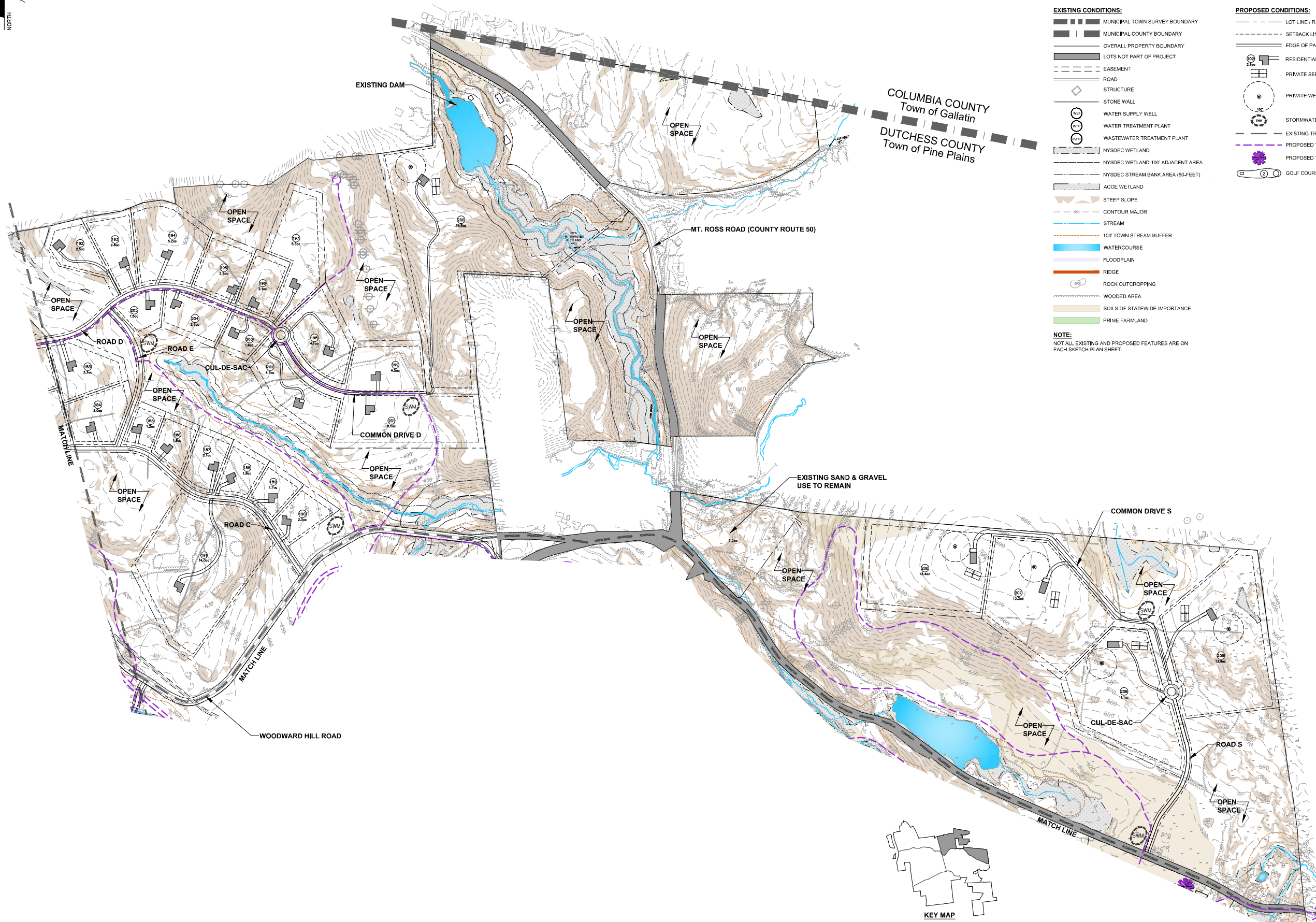
EXISTING CONDITIONS:

- MUNICIPAL TOWN SURVEY BOUNDARY
- MUNICIPAL COUNTY BOUNDARY
- OVERALL PROPERTY BOUNDARY
- LOTS NOT PART OF PROJECT
- EASEMENT
- ROAD
- STRUCTURE
- STONE WALL
- WATER SUPPLY WELL
- WATER TREATMENT PLANT
- WASTEWATER TREATMENT PLANT
- NYSDEC WETLAND
- NYSDEC WETLAND 100' ADJACENT AREA
- NYSDEC STREAM BANK AREA (50-FEET)
- ACOE WETLAND
- STEEP SLOPE
- CONTOUR MAJOR
- STREAM
- 100' TOWN STREAM BUFFER
- WATERCOURSE
- FLOODPLAIN
- RIDGE
- ROCK OUTCROPPING
- WOODED AREA
- SOILS OF STATEWIDE IMPORTANCE
- PRIME FARMLAND

PROPOSED CONDITIONS:

- LOT LINE / RIGHT OF WAY
- SETBACK LINE
- EDGE OF PAVEMENT
- RESIDENTIAL UNITS AND DRIVEWAYS
- PRIVATE SEPTIC
- PRIVATE WELL
- STORMWATER MANAGEMENT AREA
- EXISTING TRAILS
- PROPOSED TRAILS
- PROPOSED TRAIL HEAD LOCATION
- GOLF COURSE & HOLE NUMBER

NOTE:
NOT ALL EXISTING AND PROPOSED FEATURES ARE ON EACH SKETCH PLAN SHEET.



LEGEND:

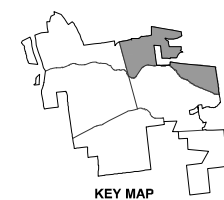
EXISTING CONDITIONS:

- MUNICIPAL TOWN SURVEY BOUNDARY
- MUNICIPAL COUNTY BOUNDARY
- OVERALL PROPERTY BOUNDARY
- LOTS NOT PART OF PROJECT
- EASEMENT
- ROAD
- STRUCTURE
- STONE WALL
- WATER SUPPLY WELL
- WATER TREATMENT PLANT
- WASTEWATER TREATMENT PLANT
- NYSDEC WETLAND
- NYSDEC WETLAND 100' ADJACENT AREA
- NYSDEC STREAM BANK AREA (50'-FEET)
- ACOE WETLAND
- STEEP SLOPE
- CONTOUR MAJOR
- STREAM
- 100' TOWN STREAM BUFFER
- WATERCOURSE
- FLOODPLAIN
- RIDGE
- ROCK OUTCROPPING
- WOODED AREA
- SOILS OF STATEWIDE IMPORTANCE
- PRIME FARMLAND

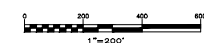
NOTE:
NOT ALL EXISTING AND PROPOSED FEATURES ARE ON
EACH SKETCH PLAN SHEET.

PROPOSED CONDITIONS:

- LOT LINE / RIGHT OF WAY
- SETBACK LINE
- EDGE OF PAVEMENT
- RESIDENTIAL UNITS AND DRIVEWAYS
- PRIVATE SEPTIC
- PRIVATE WELL
- STORMWATER MANAGEMENT AREA
- EXISTING TRAILS
- PROPOSED TRAILS
- PROPOSED TRAIL HEAD LOCATION
- GOLF COURSE & HOLE NUMBER



THIS DRAWING IS INTENDED TO BE PRINTED IN COLOR. BLACK
AND WHITE COPIES MAY NOT DISPLAY INFORMATION CORRECTLY.



OWNERS:
1133 TACONIC LLC & STISSING MOUNTAIN PROPERTY LLC
SITE ADDRESS:
FERRIS LANE, WOODWARD HILL ROAD, NYS ROUTE 199, COUNTY ROUTE 50,
STISSING MOUNTAIN ROAD, SHERWOOD ROAD, LAKE ROAD
TOWNS OF PINE PLAINS & MILAN, DUTCHESS COUNTY, NEW YORK



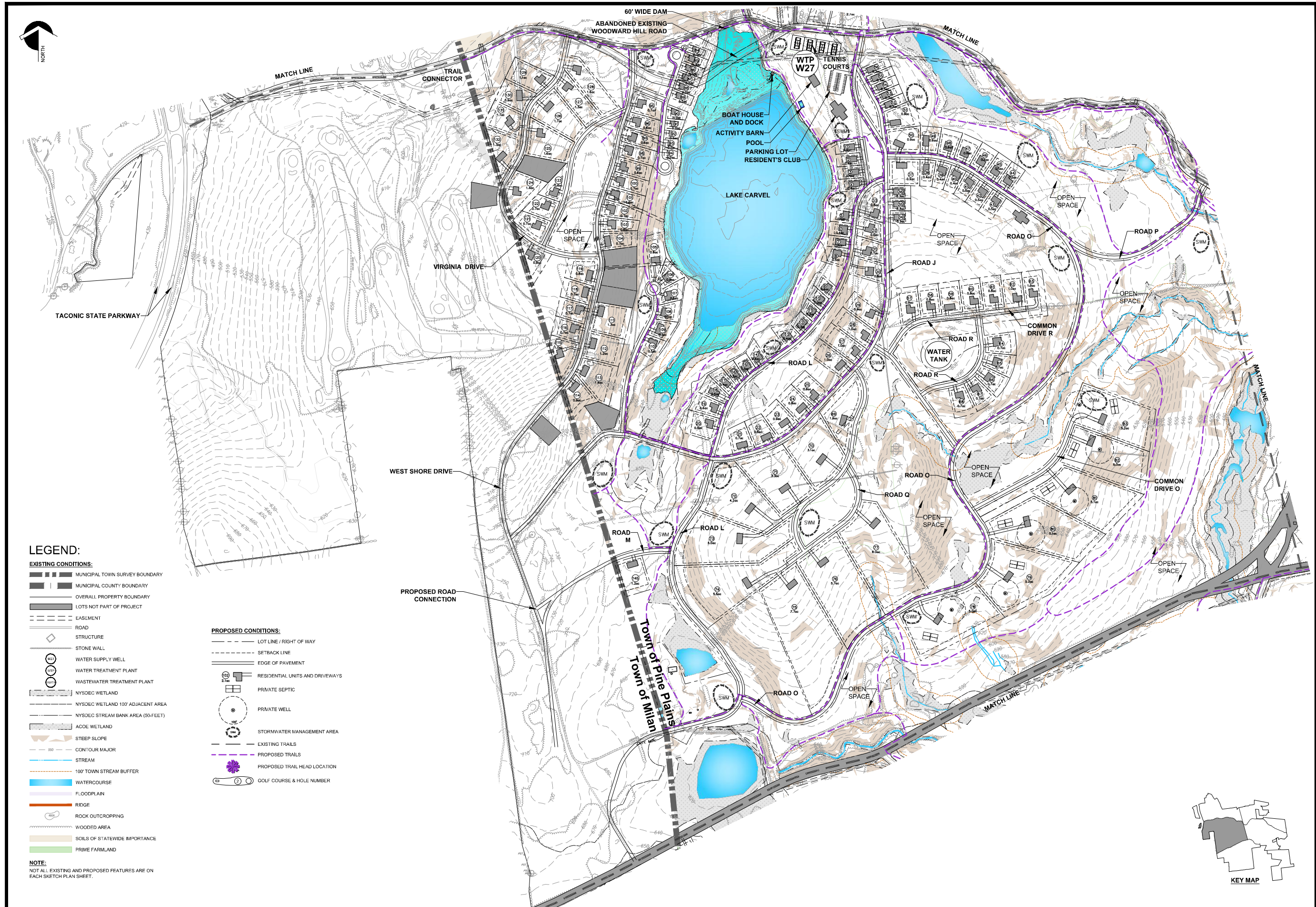
HUDSON VALLEY PROJECT

TOWNS OF PINE PLAINS & MILAN, DUTCHESS COUNTY, NEW YORK

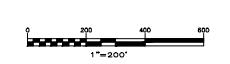


SKETCH PLAN

03/19/21
80334.CC



THIS DRAWING IS INTENDED TO BE PRINTED IN COLOR. BLACK AND WHITE COPIES MAY NOT DISPLAY INFORMATION CORRECTLY.



OWNERS:
1133 TACONIC LLC & STISSING MOUNTAIN PROPERTY LLC
SITE ADDRESS:
FERRIS LANE, WOODWARD HILL ROAD, NYS ROUTE 199, COUNTY ROUTE 50,
STISSING MOUNTAIN ROAD, SHERWOOD ROAD, LAKE ROAD
TOWNS OF PINE PLAINS & MILAN, DUTCHESS COUNTY, NEW YORK

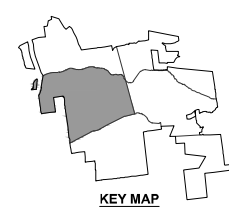


HUDSON VALLEY PROJECT

TOWNS OF PINE PLAINS & MILAN, DUTCHESS COUNTY, NEW YORK

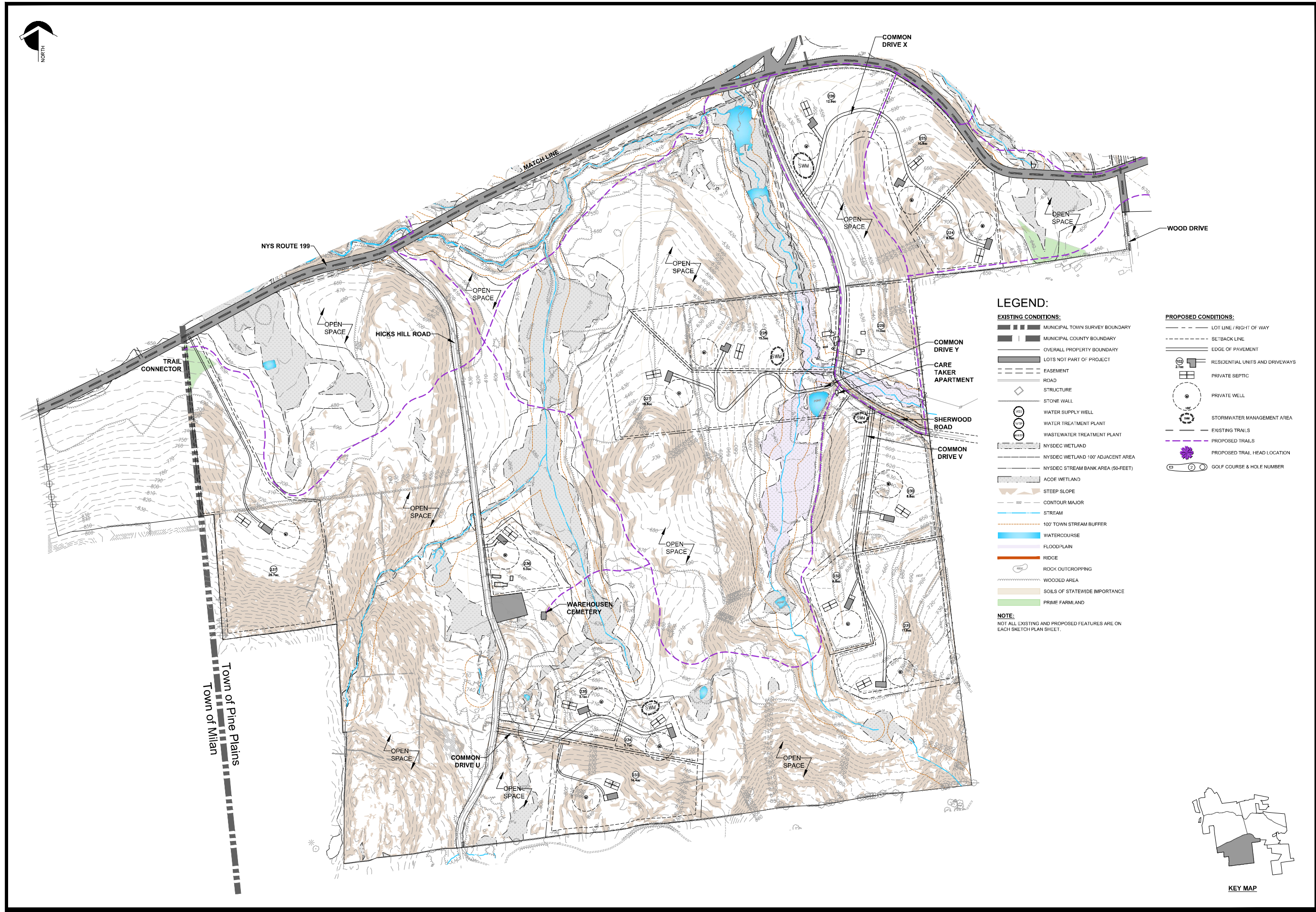


SKETCH PLAN



Drawings Name: 3:\projects\B0334-B0334-001\B0334-001.dwg
User's Name: B0334-001\B0334-001
Date Printed: 03/19/21 10:20:00 AM
Date: 03/19/21

03/19/21
80334.CC



LEGEND:

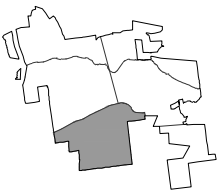
EXISTING CONDITIONS:

- MUNICIPAL TOWN SURVEY BOUNDARY
- MUNICIPAL COUNTY BOUNDARY
- OVERALL PROPERTY BOUNDARY
- LOTS NOT PART OF PROJECT
- EASEMENT
- ROAD
- STRUCTURE
- STONE WALL
- WATER SUPPLY WELL
- WATER TREATMENT PLANT
- WASTEWATER TREATMENT PLANT
- NYSDEC WETLAND
- NYSDEC WETLAND 100' ADJACENT AREA
- NYSDEC STREAM BANK AREA (50-FEET)
- ACOE WETLAND
- STEEP SLOPE
- CONTOUR MAJOR
- STREAM
- 100' TOWN STREAM BUFFER
- WATERCOURSE
- FLOODPLAIN
- RIDGE
- ROCK OUTCROPPING
- WOODED AREA
- SOILS OF STATEWIDE IMPORTANCE
- PRIME FARMLAND

NOTE:
NOT ALL EXISTING AND PROPOSED FEATURES ARE ON EACH SKETCH PLAN SHEET.

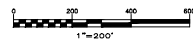
PROPOSED CONDITIONS:

- LOT LINE / RIGHT OF WAY
- SETBACK LINE
- EDGE OF PAVEMENT
- RESIDENTIAL UNITS AND DRIVEWAYS
- PRIVATE SEPTIC
- PRIVATE WELL
- STORMWATER MANAGEMENT AREA
- EXISTING TRAILS
- PROPOSED TRAILS
- PROPOSED TRAIL HEAD LOCATION
- GOLF COURSE & HOLE NUMBER



KEY MAP

THIS DRAWING IS INTENDED TO BE PRINTED IN COLOR. BLACK AND WHITE COPIES MAY NOT DISPLAY INFORMATION CORRECTLY.



OWNERS:
1133 TACONIC LLC & STISSING MOUNTAIN PROPERTY LLC
SITE ADDRESS:
FERRIS LANE, WOODWARD HILL ROAD, NYS ROUTE 199, COUNTY ROUTE 50,
STISSING MOUNTAIN ROAD, SHERWOOD ROAD, LAKE ROAD
TOWNS OF PINE PLAINS & MILAN, DUTCHESS COUNTY, NEW YORK

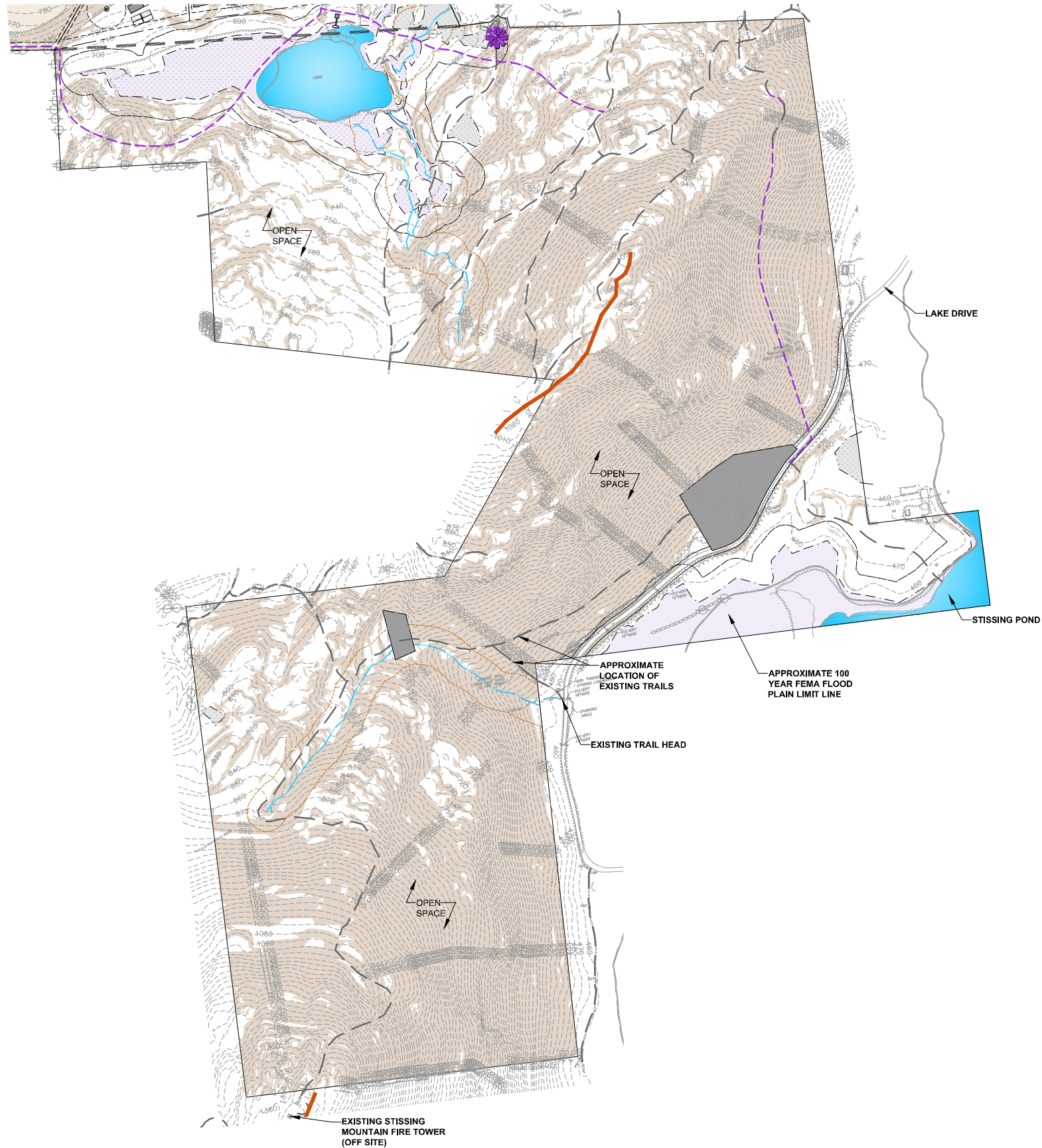


HUDSON VALLEY PROJECT
TOWNS OF PINE PLAINS & MILAN, DUTCHESS COUNTY, NEW YORK



SKETCH PLAN

03/19/21
80334.CC



LEGEND:

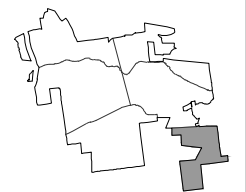
EXISTING CONDITIONS:

- MUNICIPAL TOWN SURVEY BOUNDARY
- MUNICIPAL COUNTY BOUNDARY
- OVERALL PROPERTY BOUNDARY
- LOTS NOT PART OF PROJECT
- EASEMENT
- ROAD
- STRUCTURE
- STONE WALL
- WATER SUPPLY WELL
- WATER TREATMENT PLANT
- WASTEWATER TREATMENT PLANT
- NYSDEC WETLAND
- NYSDEC WETLAND 100' ADJACENT AREA
- NYSDEC STREAM BANK AREA (50-FEET)
- ACOE WETLAND
- STEEP SLOPE
- CONTOUR MAJOR
- STREAM
- 100' TOWN STREAM BUFFER
- WATERCOURSE
- FLOODPLAIN
- RIDGE
- ROCK OUTCROPPING
- WOODED AREA
- SOILS OF STATEWIDE IMPORTANCE
- PRIME FARMLAND

PROPOSED CONDITIONS:

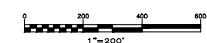
- LOT LINE / RIGHT OF WAY
- SETBACK LINE
- EDGE OF PAVEMENT
- RESIDENTIAL UNITS AND DRIVEWAYS
- PRIVATE SEPTIC
- PRIVATE WELL
- STORMWATER MANAGEMENT AREA
- EXISTING TRAILS
- PROPOSED TRAILS
- PROPOSED TRAIL HEAD LOCATION
- GOLF COURSE & HOLE NUMBER

NOTE:
NOT ALL EXISTING AND PROPOSED FEATURES ARE ON EACH SKETCH PLAN SHEET.



KEY MAP

THIS DRAWING IS INTENDED TO BE PRINTED IN COLOR. BLACK AND WHITE COPIES MAY NOT DISPLAY INFORMATION CORRECTLY.



OWNERS:
133 TACONIC LLC & STISSING MOUNTAIN PROPERTY LLC
SITE ADDRESS:
FERRIS LANE, WOODWARD HILL ROAD, NYS ROUTE 199, COUNTY ROUTE 50,
STISSING MOUNTAIN ROAD, SHERWOOD ROAD, LAKE ROAD
TOWNS OF PINE PLAINS & MILAN, DUTCHESS COUNTY, NEW YORK



HUDSON VALLEY PROJECT

TOWNS OF PINE PLAINS & MILAN, DUTCHESS COUNTY, NEW YORK



SKETCH PLAN

03/19/21
80334.CC